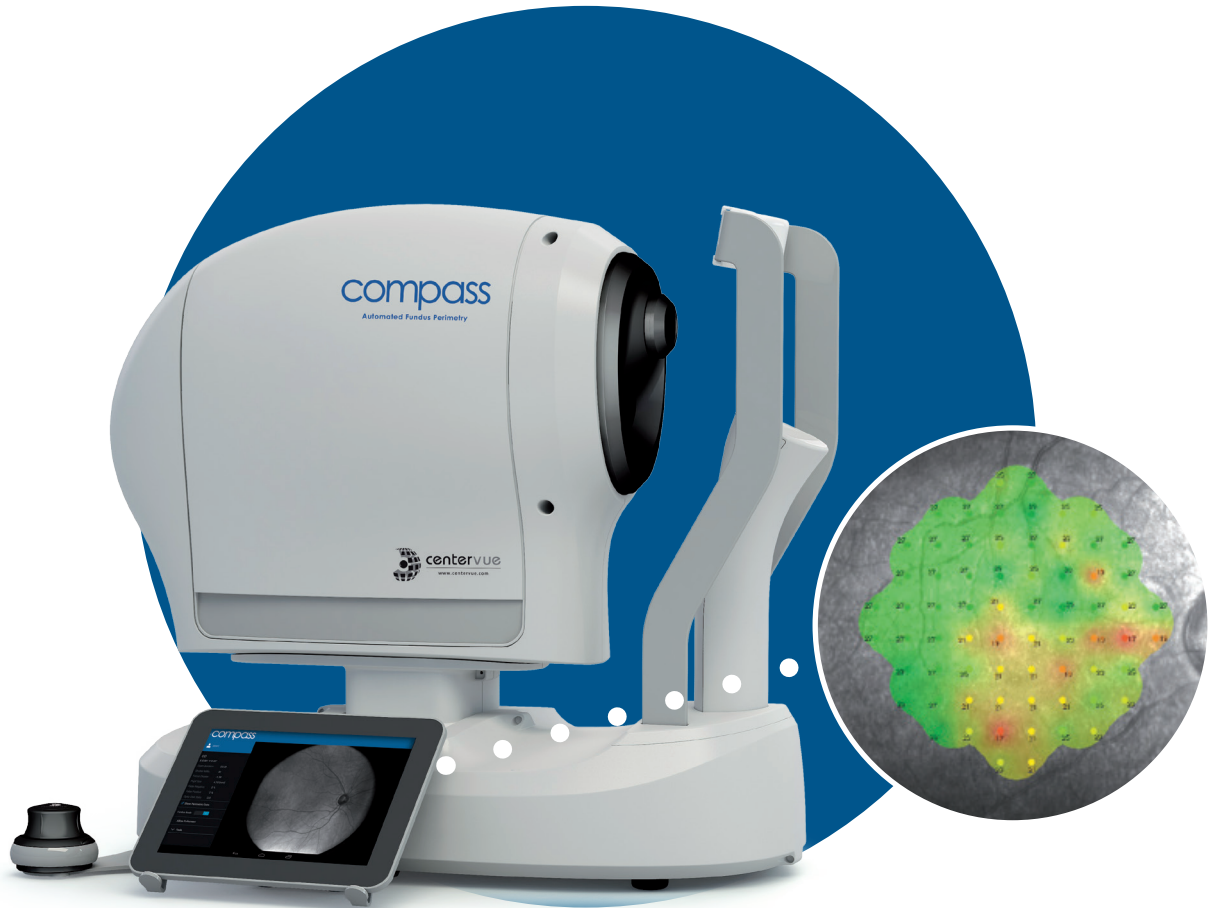


compass

the evolution of fundus automated perimetry



The first fundus perimeter capable of performing standard 24-2 Visual Field testing and the first confocal system delivering true-colour images.

COMPASS is a scanning ophthalmoscope combined with an automatic perimeter that provides confocal images of the retina, as well as measurements of retinal threshold sensitivity, under non-mydratic conditions.

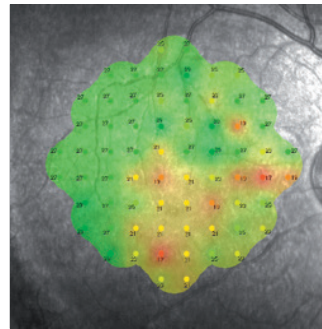
The completely automated process includes:

- Alignment of the instrument to the patient, using bilateral pupil tracking
- Auto-focus, correcting patients' spherical refraction
- Acquisition of live, infra-red, retinal images
- Execution of Visual Field test & collection of fixation data
- Compensation of eye movements during VF testing, using retina and pupil tracking
- Acquisition of a colour retinal image (including auto-exposure)

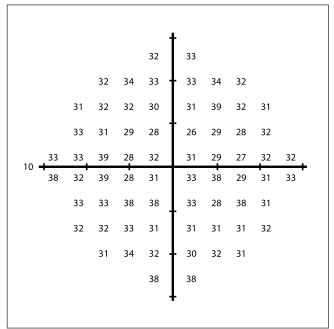
The only intervention by the operator during the automated process is the selection of the centre of the ONH

Compass Automated Fundus Perimeter

- Scanning Ophthalmoscope
- Fully automated VF Testing (24-2, 10-2)
- Coloured red-free infrared Imaging
- Confocal 60° Imaging
- Fixation Analysis



Example of 10-2 Fundus Automated Perimetry



Example of 10-2 SAP

Technical Specifications

Fundus Automated Perimetry	Projection field:	60° (diameter)		
	Background Luminance:	31.4 asb	Maximum Luminance:	10000 asb
	Dynamic Range:	0 - 50 dB		
	Stimulus Size:	Goldmann III	Stimulus Duration:	200 ms
	Threshold Rests:	24-2, 10-2		
	Fixation Control:	25Hz Automated Retinal Tracking, Programmable, internal		
Fundus Imaging	Field of View:	60° (diameter)		
	Sensor Resolution:	5 Megapixel (2592x1944)		
	Light Source:	Infrared (825-870 nm) and white LED (440-650 nm)		
	Imaging Modalities:	Colour, Infra-red, Red-Free		
	Resolution:	17 microns		
Auto Focus	Adjustment Range:	-12D to +15D		
Non-Mydriatic Operation	Minimum Pupil Size:	3 mm		
Working Distance	28 mm			
User Interface	High-resolution multi-touch tablet			
Connectivity	Wi-Fi and Ethernet			
Other Features	<ul style="list-style-type: none"> • Automatic Operation: auto-alignment, auto-focus, auto-retinal tracking, auto-pupil tracking, auto-exposure, auto-capture, auto-refraction compensation 		<ul style="list-style-type: none"> • Foveal Threshold Testing • Printer: any printer compatible with Tablet • Hard Disk: SSD, 240 GB 	
Dimensions	Weight:	25 kg	Size:	(H) 620 X (W) 590 X (D) 360mm
	Voltage:	100-240 VAC, 50-60 Hz		
Power	Consumption:	80 W		

For more information on the Compass Fundus Perimeter, please contact us.