



n e x y<sup>®</sup>

CAPTURE CRYSTAL CLEAR RETINAL  
IMAGES IN A FULLY AUTOMATIC WAY

**VISIONIX**  
The Vision of the Future



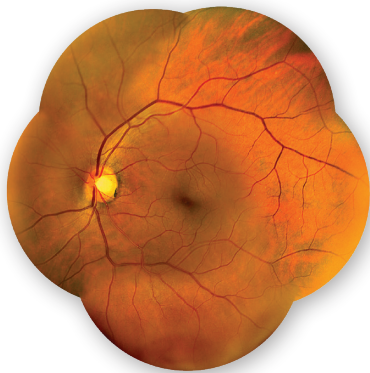
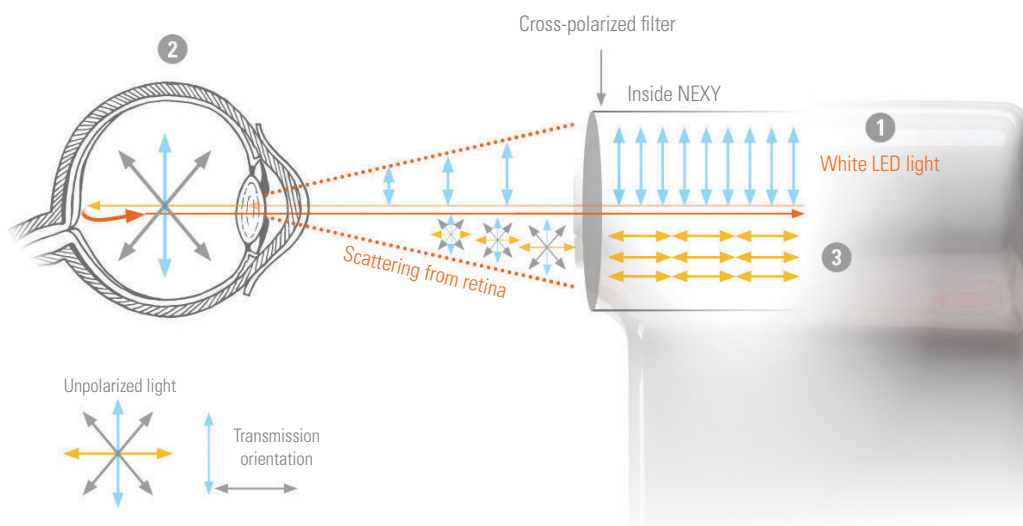
# Nexy: retinal screening at a glance

- Fully automated
- Meets social distancing guidelines
- AI compatible



## Exclusive technology

Nexy utilises an innovative cross-polarized light technology that provides excellent image quality while maintaining a compact footprint.



**AMD**

**Diabetic Retinopathy**

**Epiretinal Membrane**

**Glaucoma**

# NEXY

## VALUE-ADDED FEATURES

- Robotic movements: auto-alignment, autofocus and auto-capture. Just press Start and Nexy does the rest
- Automatic capture of high-quality images for detailed screening and evaluation with minimal personal training
- Pleasant aesthetic: small footprint and ergonomic design
- Modern gesture interaction: the intuitive interface facilitates a quick start and smooth navigation
- Review images from a local PC (in .DCM format as well as jpg/png format) or from an intranet PC
- Review images from the Next Sight website using a personal and secure account
- Teamviewer application for remote assistance



# Way to share images

FUNDUS CAMERA  
to take retinal images  
and perform exams



wifi

bluetooth



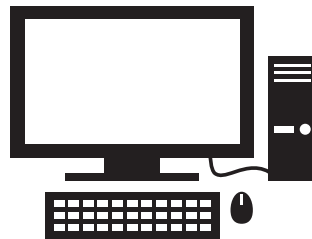
TABLET  
To insert patient data  
and START exam



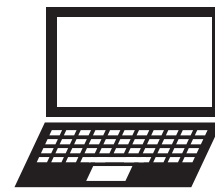
PRIVATE ACCOUNT  
(username+PW)  
to review images on the password  
protected Next Sight website



CLOUD / DICOM server  
(storage service where all  
images are saved)



PC connected to the  
intranet (shared folder)



Local PC (no intranet)  
through fundus-adapter



## Protection of patient data

**Nexy is GDPR compliant.**

Patient sensitive data is secure thanks to client-side data encryption. This means that patient data is encrypted on the sender's side, before it is transmitted to a server such as a cloud storage service.

This client-side encryption guarantees secure privacy and GDPR compliance.

# n e x y<sup>®</sup>

## TECHNICAL SPECIFICATIONS

### HARDWARE SPECIFICATION

<b>Field of view</b>	45°
<b>Field of view with mosaic function</b>	90°
<b>Retinal resolution</b>	14 microns
<b>Fixations</b>	7 fixations set-ups
<b>Tablet dimensions</b>	10.4"
<b>Weight</b>	32,4 lbs
<b>Size</b>	13,4 x 16,9 x 18,1 in.

### SOFTWARE SPECIFICATION

<b>Image filters (vascular, choroidal, nerve fibre, red free)</b>
<b>Cup-to-disc ratio for glaucoma screening</b>
<b>Automatic mosaic function</b>
<b>Shared intranet folder</b>
<b>DICOM standard compatible</b>
<b>Fundus adapter to transfer images to a local pc</b>



### DATA MANAGEMENT

<b>Full AI integration (option)</b>
<b>Cloud-based secure storage</b>
<b>Client-side data encryption</b>
<b>Automatic database backup</b>
<b>Review images from the password protected website, a network shared folder or a local PC</b>
<b>Multilevel account</b>
<b>Access by personal user</b>



NEXY meets social distancing guidelines



## ABOUT US

The Luneau Technology group, bringing together the Visionix®, Briot® and Weco® brands, is a major force in the market, with a range of equipment to cover all the Eye Care Professionals' requirements: Refraction and ophthalmic diagnosis, lens inspection in industrial production and lens cutting in the optician's lab.

Our aim has always been to provide you with the latest technologies to permit quicker screening for visual disorders and provide a better quality of life, with ever more effective equipment. Our aim is to provide innovative and increasingly efficient technologies that allow you to rapidly screen for visual disorders, providing your patients with a better quality of life



n e x y<sup>®</sup>



**LUNEAU TECHNOLOGY OPERATIONS**

2 Rue Roger Bonnet-27340 PONT DE L'ARCHE - FRANCE - Tel. + 33 232 989 132 - Fax + 33 235 020 294  
contact@luneautech.com - [www.luneautech.com](http://www.luneautech.com)