



LED  
powered

HIS-5000U

HUVITZ SLIT LAMP

Advanced solution with DSLR camera mount

HUVITZ

HUVITZ  
MICROSCOPE SLIT LAMP

Feel your professionalism through your DSLR and the built-in imaging system. More than the advanced, the new slit lamp HIS-5000U



#### DIGITAL CAMERA

- Upgraded 10M Pixel Camera - improved implementation of high-resolution images
- USB Port - HD image processing by easy connecting
- Easy fine-tune of the focus adjustment control (Focusing)
- New S/W Upgrade - more precise measurements (length, width, etc.)
- The Compact and modern design

Classifications	HIS-5000U(10.0M)	HIS-5000U(1.4M)
Image sensor	1/2" CMOS	1/2" CCD
Image size(pixels)	up to 3,840x2,748	up to 1,280x1,024
Cell size	1.67 $\mu$ m x 1.67 $\mu$ m	4.65 $\mu$ m x 4.65 $\mu$ m
Transmit method	USB 2.0	USB 2.0
Transmit speed	480Mbps	480Mbps
Frame rate	Maximum 30fps	Maximum 15fps
Lens mount	C-Mount	C-Mount
Power consumption	2.5W	2.5W

#### DSLR ADAPTER

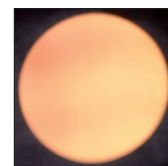
- 18M~22M pixel of high-resolution images (Only Canon available)
- Binocular field of view can be switched
- Easy fine-tune of the focus adjustment control (Focusing)
- New S/W Upgrade - more precise measurements (length, width, etc.)
- Duplex image transmissions between DSLR & PC
- More details : supporting Canon EF& EOS (Flange back : 44mm) EOS 600D, 650D, 60D, 5D & etc.  
(Supporting the latest Canon camera models soon)

#### LED LAMP

- Supporting more comfortable eye test for both operator and patient
- Semi-Permanent LED lamp illumination - lifetime warranty
- Power consumption : 15W
- Brighter and more homogeneous LED powered slit than halogen



LED



Halogen

**Huvitz**

Huvitz Bldg., 298-29, Gongdan-ro, Gunpo-si,  
Gyeonggi-do, 435-862, Korea  
Tel:+82-31-442-8868 Fax:+82-31-477-8617  
<http://www.huvitz.com>

Distributed by