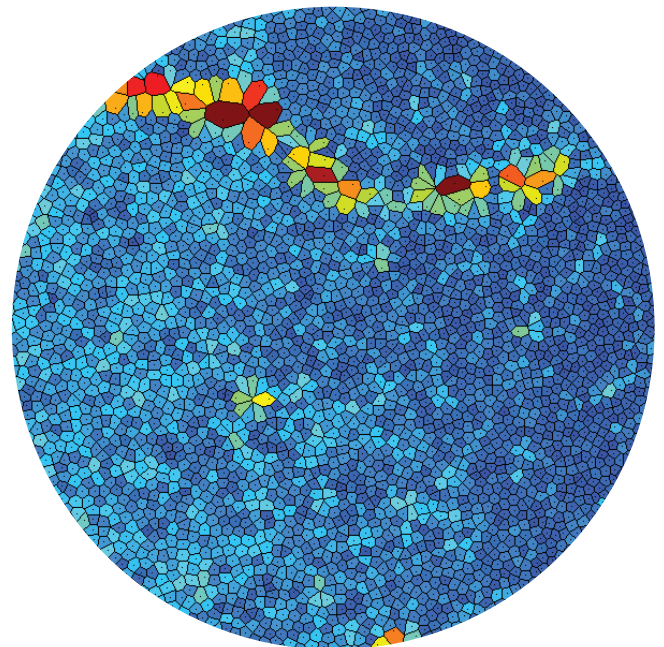
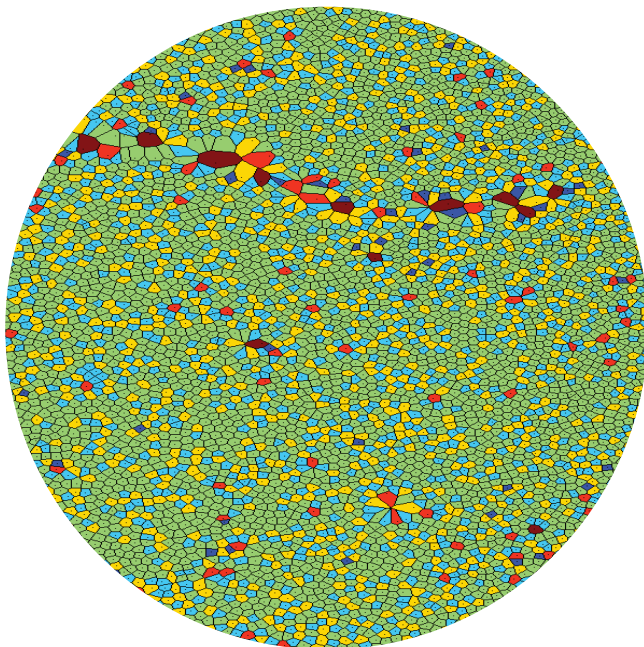
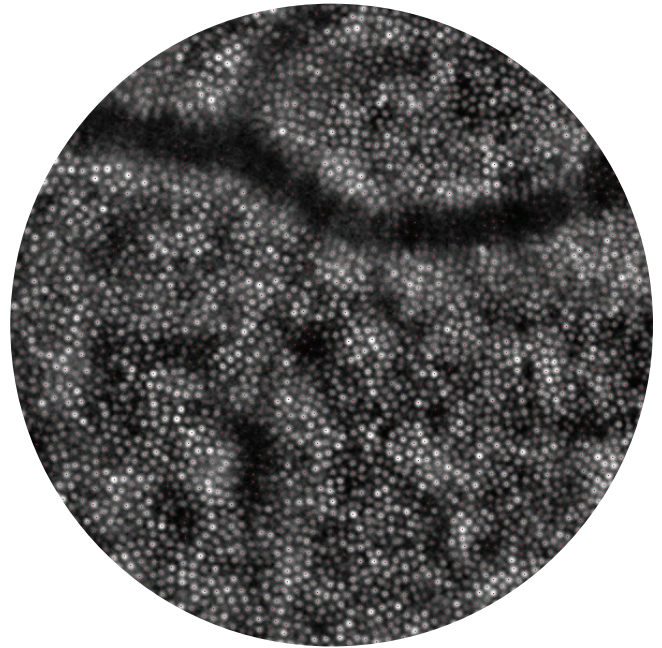
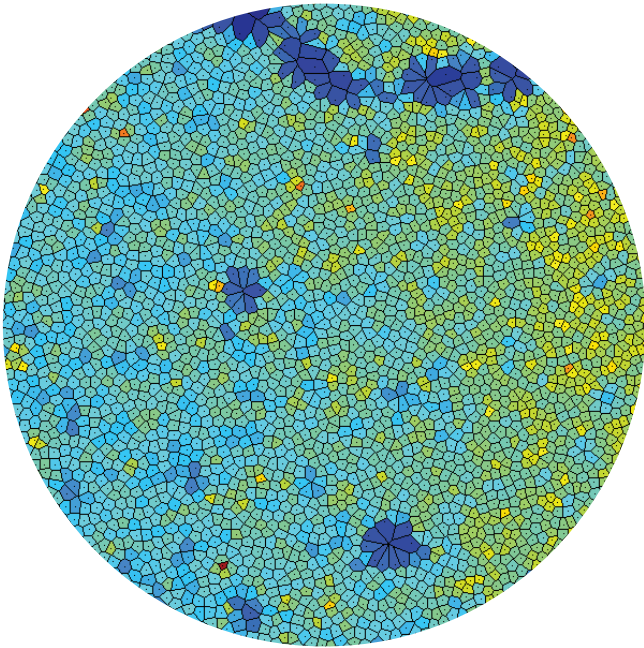


# AOdetect™ mosaic

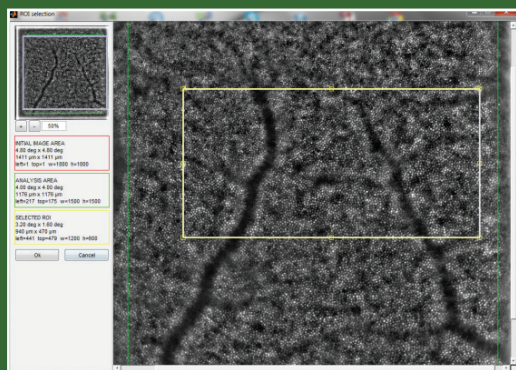
## Cone Photoreceptor Mosaic Analysis



# AOdetect™ mosaic

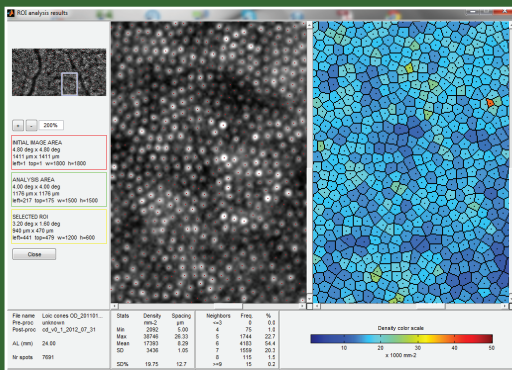
Software for the rtx1-e™  
Adaptive Optics  
Retinal Camera

## 4-Step Analysis



1. Region-of-interest selection
2. Extra foveolar cone detection
3. Computation of cone mosaic descriptors: statistics and colour-coded, voronoi diagrams
4. Export data into various formats (excel, graphics, text)

## Mosaic Descriptors



- Cell Density
- Inter-cell Spacing
- Pleomorphism (number of closest neighbours)

Stats	Density mm <sup>-2</sup>	Spacing µm	Neighbors <=3	Freq.	%
Min	2092	5.00	4	75	1.0
Max	38746	26.33	5	1744	22.7
Mean	17393	8.29	6	4183	54.4
SD	3436	1.05	7	1559	20.3
			8	115	1.5
SD%	19.75	12.7	>=9	15	0.2

